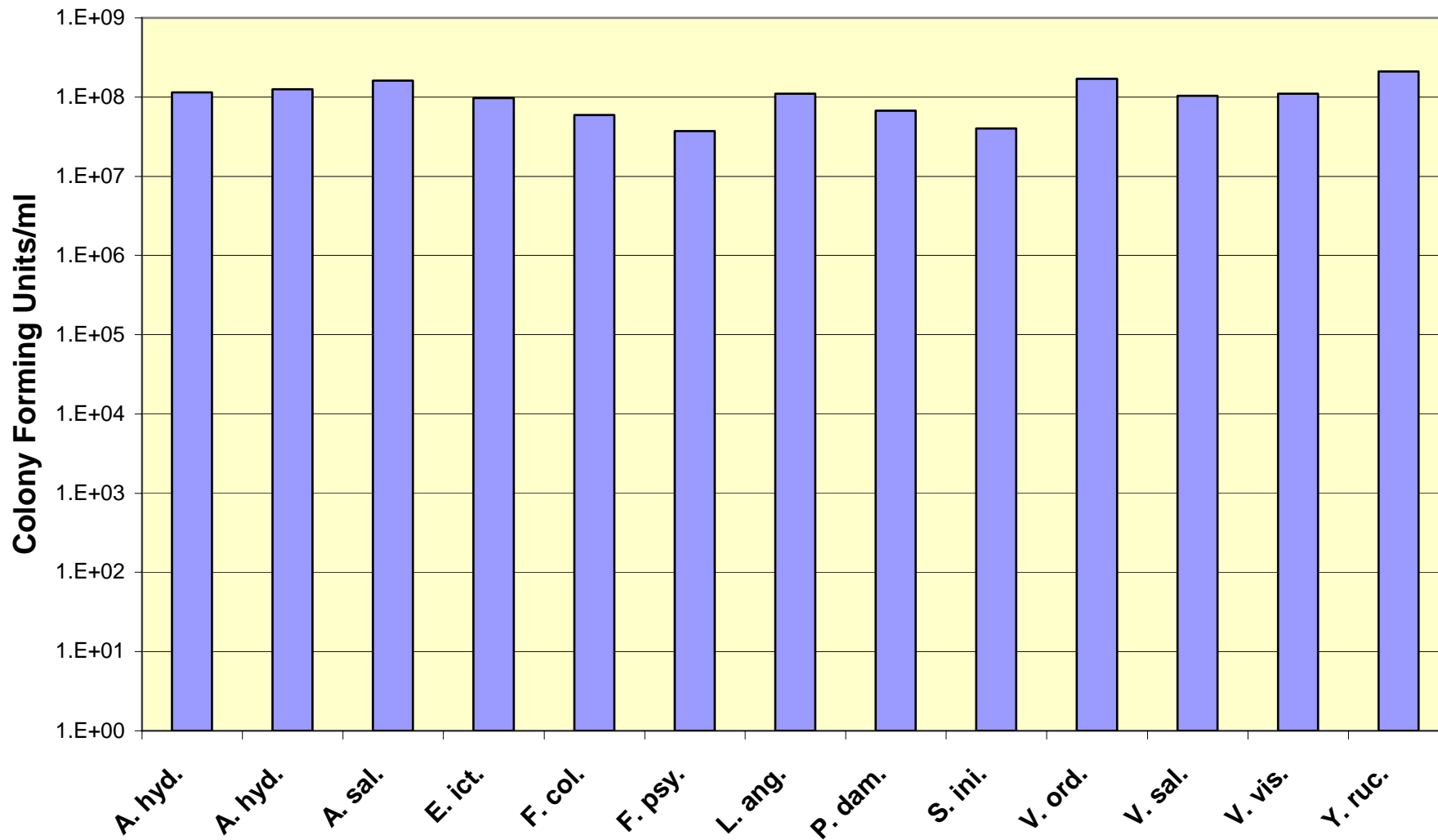
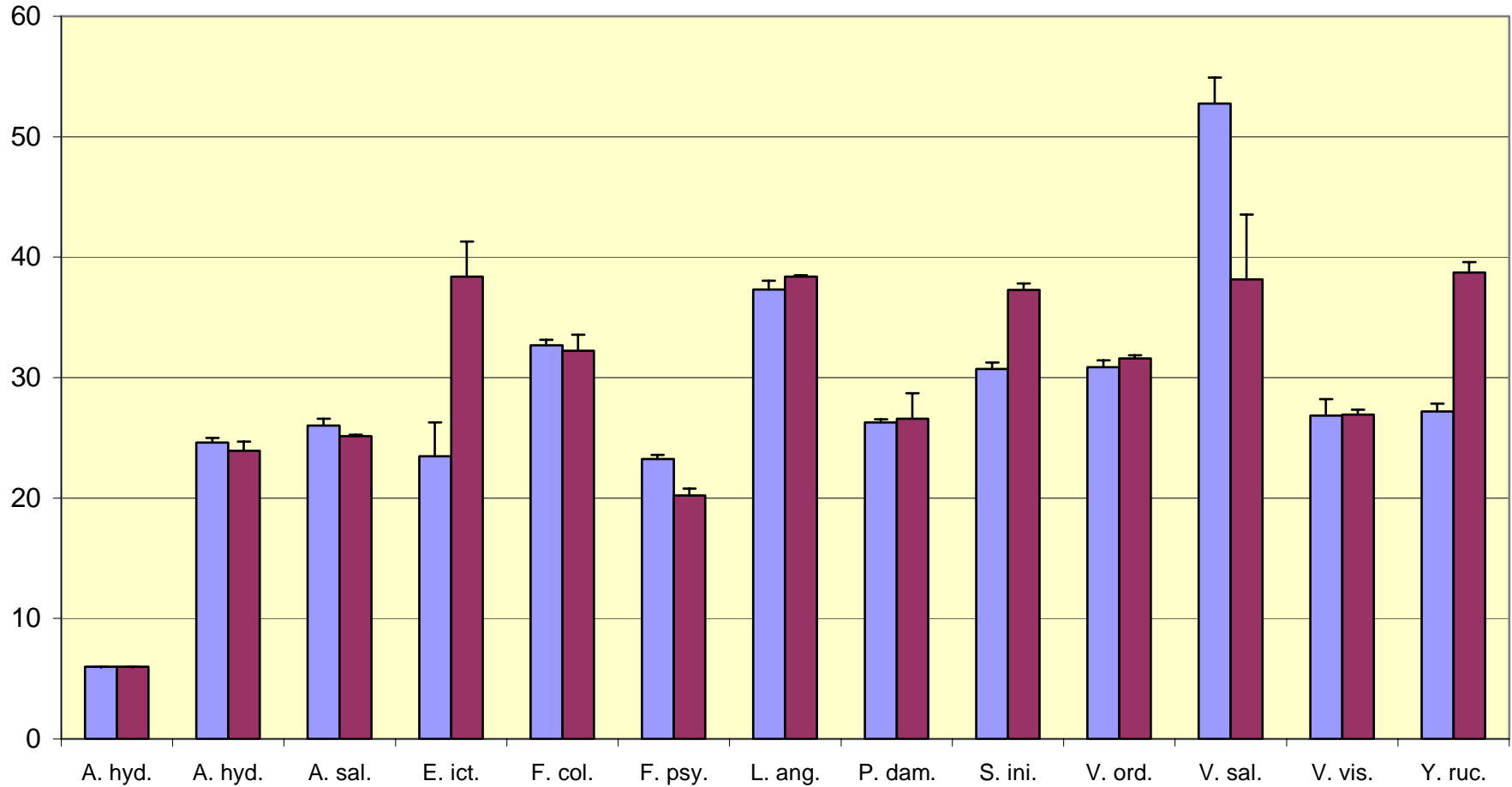


**Figure 1. Bacterial Concentration (cfu/ml)  
For the Romet Disc Sensitivity Assay**



**Figure 2. Romet Disc Sensitivity Diameters (mm)  $\pm$  SDEV  
to a Variety of Bacterial Fish Pathogens  
[Resistant (<10), Intermediate (11-15) or Susceptible (>16)]**



**Figure 3. Minimum Inhibitory Concentration of Romet (mg/L) for a Variety of Fish Pathogens Using the 96 Well Plates**

